

## Modular Cooking Range Line EVO700 2-Hot Plates Electric Boiling Top Range

ITEM # \_\_\_\_\_

MODEL # \_\_\_\_\_

NAME # \_\_\_\_\_

SIS # \_\_\_\_\_

AIA # \_\_\_\_\_

**372014 (Z7ECED2R00)**2-hot plate (2,6 kW each)  
electric boiling top**372126 (Z7ECED2R0N)**2-hot plate (2,6 kW each)  
electric boiling top

### Short Form Specification

**Item No.** \_\_\_\_\_

To be installed on open base installations, bridging supports or cantilever systems. Two 2.6 kW cast-iron hot plates hermetically sealed to the one-piece top. Exterior panels in stainless steel with Scotch Brite finish. One piece pressed work top in 1.5 mm thick stainless steel. Right-angled side edges to allow flush-fitting junction between units.

### Main Features

- Unit to be mounted on open base cupboards, bridging supports or cantilever systems.
- The two 2.6kW cast-iron plates are hermetically sealed to the one-piece top.
- The special design of the control knob system guarantees against water infiltration.
- IPx4 water protection.
- Suitable for countertop installation.

### Construction

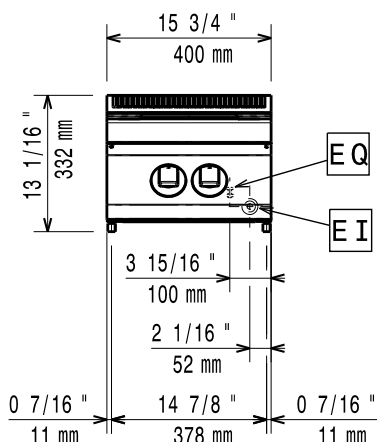
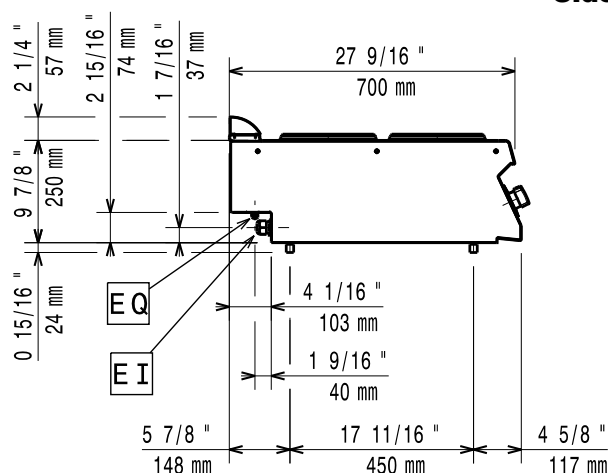
- One piece pressed 1.5 mm work top in Stainless steel.
- Model has right-angled side edges to allow flush fitting joints between units, eliminating gaps and possible dirt traps.
- External panel in Stainless Steel with Scotch Brite finish.

APPROVAL: \_\_\_\_\_

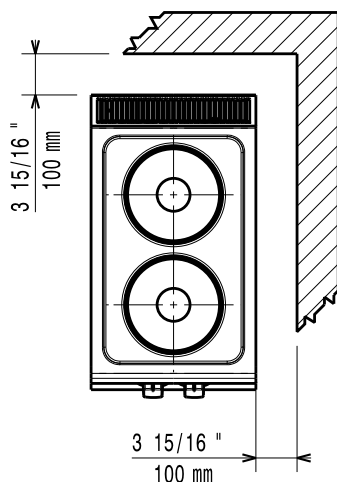
## Optional Accessories

- |  |            |                          |
|--|------------|--------------------------|
| • Junction sealing kit (only for 372014)   | PNC 206086 | <input type="checkbox"/> |
| • Support for bridge type installation, 800 mm (only for 372014)                       | PNC 206137 | <input type="checkbox"/> |
| • Support for bridge type installation, 1000 mm (only for 372014)                      | PNC 206138 | <input type="checkbox"/> |
| • Support for bridge type installation, 1200 mm (only for 372014)                      | PNC 206139 | <input type="checkbox"/> |
| • Support for bridge type installation, 1400 mm (only for 372014)                      | PNC 206140 | <input type="checkbox"/> |
| • Support for bridge type installation, 1600 mm (only for 372014)                      | PNC 206141 | <input type="checkbox"/> |
| • Support for bridge type installation, 400 mm (only for 372014)                       | PNC 206154 | <input type="checkbox"/> |
| • Frontal handrail 400 mm (only for 372014)  | PNC 206166 | <input type="checkbox"/> |
| • Frontal handrail 800 mm (only for 372014)  | PNC 206167 | <input type="checkbox"/> |
| • Large handrail (portioning shelf) 400 mm (only for 372014)                           | PNC 206185 | <input type="checkbox"/> |
| • Large handrail (portioning shelf) 800 mm (only for 372014)                           | PNC 206186 | <input type="checkbox"/> |
| • Frontal handrail 1200 mm (only for 372014)   | PNC 206191 | <input type="checkbox"/> |
| • Frontal handrail 1600 mm (only for 372014)   | PNC 206192 | <input type="checkbox"/> |
| • Right and left side handrails (only for 372014)                                      | PNC 206240 | <input type="checkbox"/> |
| • Water column with swivel arm (water column extension not included) (only for 372014) | PNC 206289 | <input type="checkbox"/> |
| • Water column extension (only for 372014)   | PNC 206291 | <input type="checkbox"/> |
| • Chimney upstand, 400 mm (only for 372014)  | PNC 206303 | <input type="checkbox"/> |
| • 2 side covering panels, height 250 mm, depth 700 mm (only for 372014)                | PNC 206320 | <input type="checkbox"/> |
| • Chimney grid net, 400mm (only for 372014)  | PNC 206400 | <input type="checkbox"/> |

# Modular Cooking Range Line EVO700 2-Hot Plates Electric Boiling Top Range

**Front**

**Side**


EI = Electrical inlet (power)  
 EQ = Equipotential screw

**Top**


## Electric

### Supply voltage:

372014 (Z7ECED2R00)	380-400 V/3 ph/50-60 Hz
372126 (Z7ECED2R0N)	230 V/3 ph/50/60 Hz

### Predisposed for:

Total Watts:	5.2 kW
--------------	--------

## Key Information:

If appliance is set up or next to or against temperature sensitive furniture or similar, a safety gap of approximately 150 mm should be maintained or some form of heat insulation fitted.

Net weight:	20 kg
-------------	-------

### Shipping weight:

372014 (Z7ECED2R00)	23.8 kg
372126 (Z7ECED2R0N)	23 kg

### Shipping height:

372014 (Z7ECED2R00)	550 mm
372126 (Z7ECED2R0N)	540 mm

### Shipping width:

Shipping depth:	460 mm
-----------------	--------

Shipping volume:	820 mm
------------------	--------

372014 (Z7ECED2R00)	0.21 m <sup>3</sup>
372126 (Z7ECED2R0N)	0.2 m <sup>3</sup>

### [NOT TRANSLATED]

372014 (Z7ECED2R00)	EH72T
372126 (Z7ECED2R0N)	N7CE1

Front Plates Power:	2.6 - 0 kW
---------------------	------------

Back Plates Power:	2.6 - kW
--------------------	----------

Front Plates dimensions:	Ø 230
--------------------------	-------

Back Plates dimensions:	Ø 230
-------------------------	-------